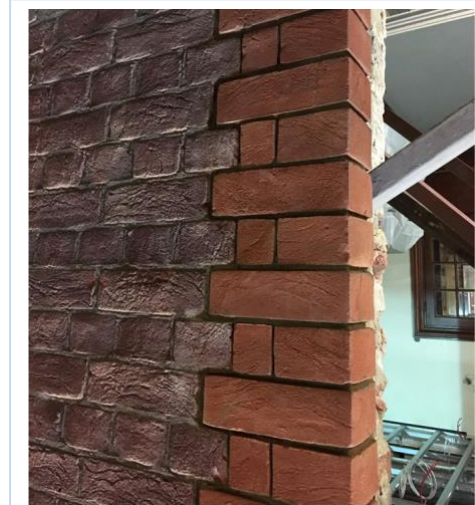
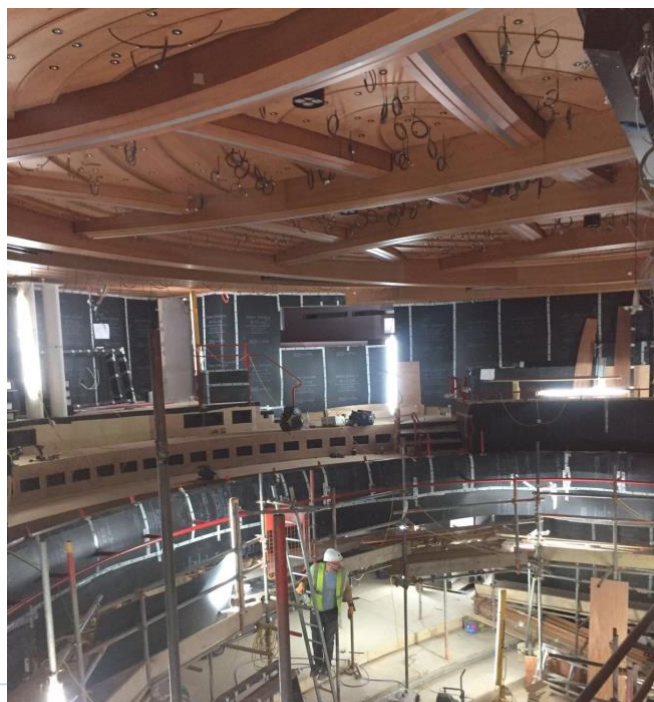


Royal Academy of Music London NW1



Client	Royal Academy Of Music	Construction of new auditorium with in the Royal Academy of music involving Piling, Concrete works, Brick and blockwork including restoration To the external brickwork
MC	Osbourne	
Architect	Ian Ritchie	
Engineer	Arup	
Value	£2m	
Date	2017 / 18	
Package	Brickwork / Concrete/fitout	